

GOYA CONTEMPORARY  
GOYA-GIRL PRESS

# ALAN SHIELDS



Known for his unrestricted fluency across media, Shields created unique, avantgarde, and imaginative structures that blur the hierarchy of materials using extravagant, unconventional methods. The exhibition includes wall-mounted constructions on and of paper or fabric, layered with lush, bright colors and loose geometric patterns. Animated by sensuous lines and energetic shapes, these works pulsate with innovation and discovery, if not joy.

Rather than executing through conventional methods, throughout his life and practice, Shields embraced playful experimentation in papermaking, and in cumulative techniques such as layering pulpy paper compositions over sculpted, stitched, cut, painted, beaded, and/or printed elements that both celebrate and transcend their material forms. These objects create an energy that permeates the room like whimsical living entities inviting us to contemplate their existence while simultaneously asking us to [metaphorically] dance to their self-created visual vibrations and animated dynamism.

Born in Herington, KS, in 1944, Alan Shields attended Kansas State University (1963 to 1966) where he studied civil engineering and studio art. He moved to New York City in 1968, where he exhibited with Paula Cooper Gallery for over twenty years. In 1972, the artist permanently moved to his home in Shelter Island, NY. One year later, in 1973, Shields was a recipient of a Guggenheim Fellowship.

Alan Shields' artwork is represented in the collections of the Metropolitan Museum of Art, New York, NY; Museum of Modern Art, New York, NY; National Gallery of Art, Washington, D.C.; The Solomon R. Guggenheim Museum, New York, NY; Tate Collection, London, UK; Walker Art Center, Minneapolis, MN; the Whitney Museum of American Art, New York, NY; among countless other prestigious public and private collections. Important museum exhibitions include "Alan Shields: Common Threads," Parrish Art Museum, Water Mill, NY (2018); "Alan Shields: Protracted Simplicity (1966-1985)," Aspen Art Museum, Aspen, CO (2016); "Into the Maze," SITE Santa Fe, NM (2014); "Alan Shields: A Survey," The Beach Museum of Art, Manhattan, KS (1999); "1968 – 1983: The Work of Alan Shields," Memphis Brooks Museum of Art, Memphis, TN (1983), which traveled to Lowe Art Museum, Coral Gables, FL, and Nelson-Atkins Museum of Art, Kansas City, MO; "Alan Shields: Paintings and Prints," Williams College Museum of Art, Williamstown, MA (1981).



**Alan Shields**

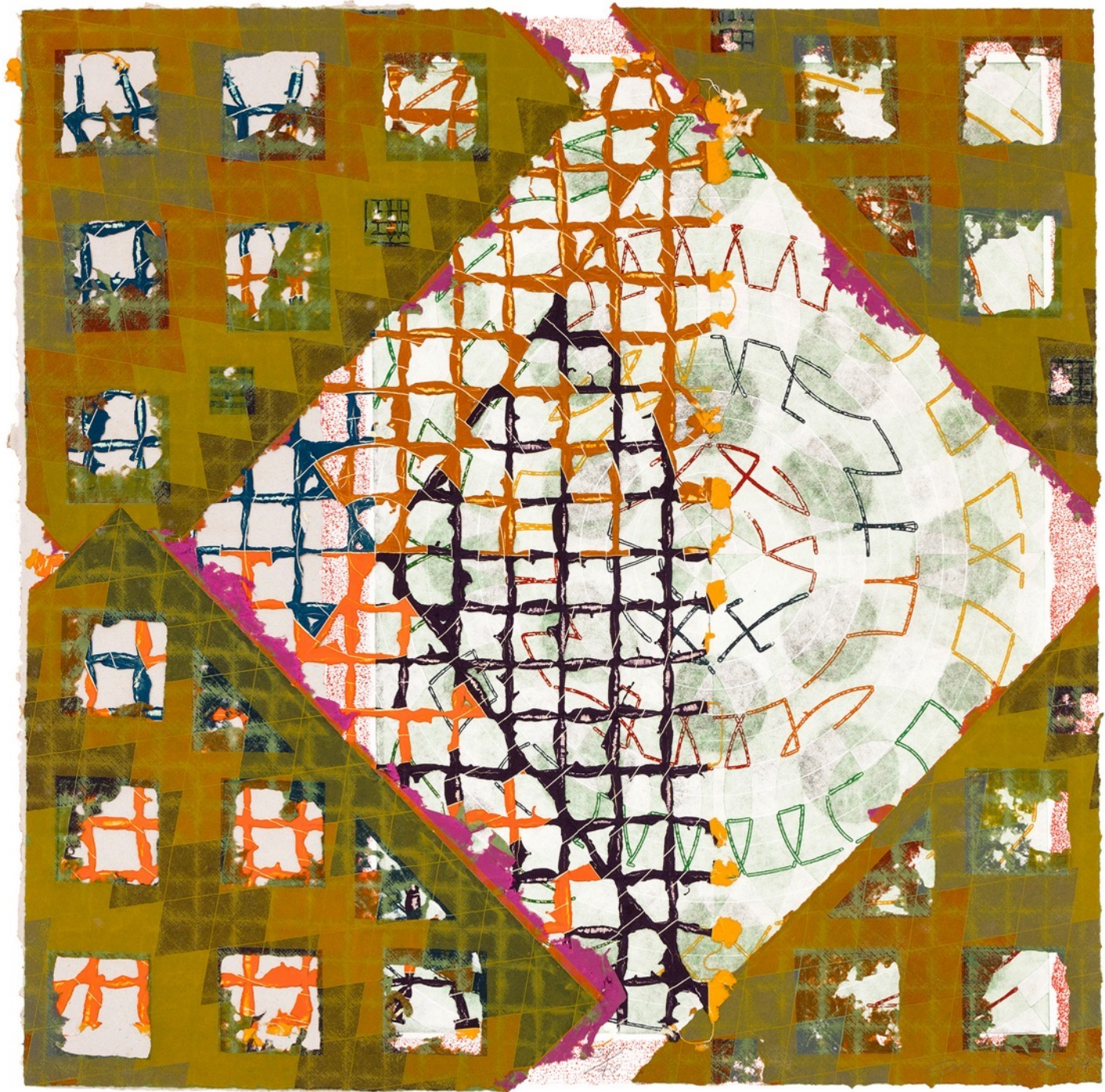
*Bull-Pen*, 1984

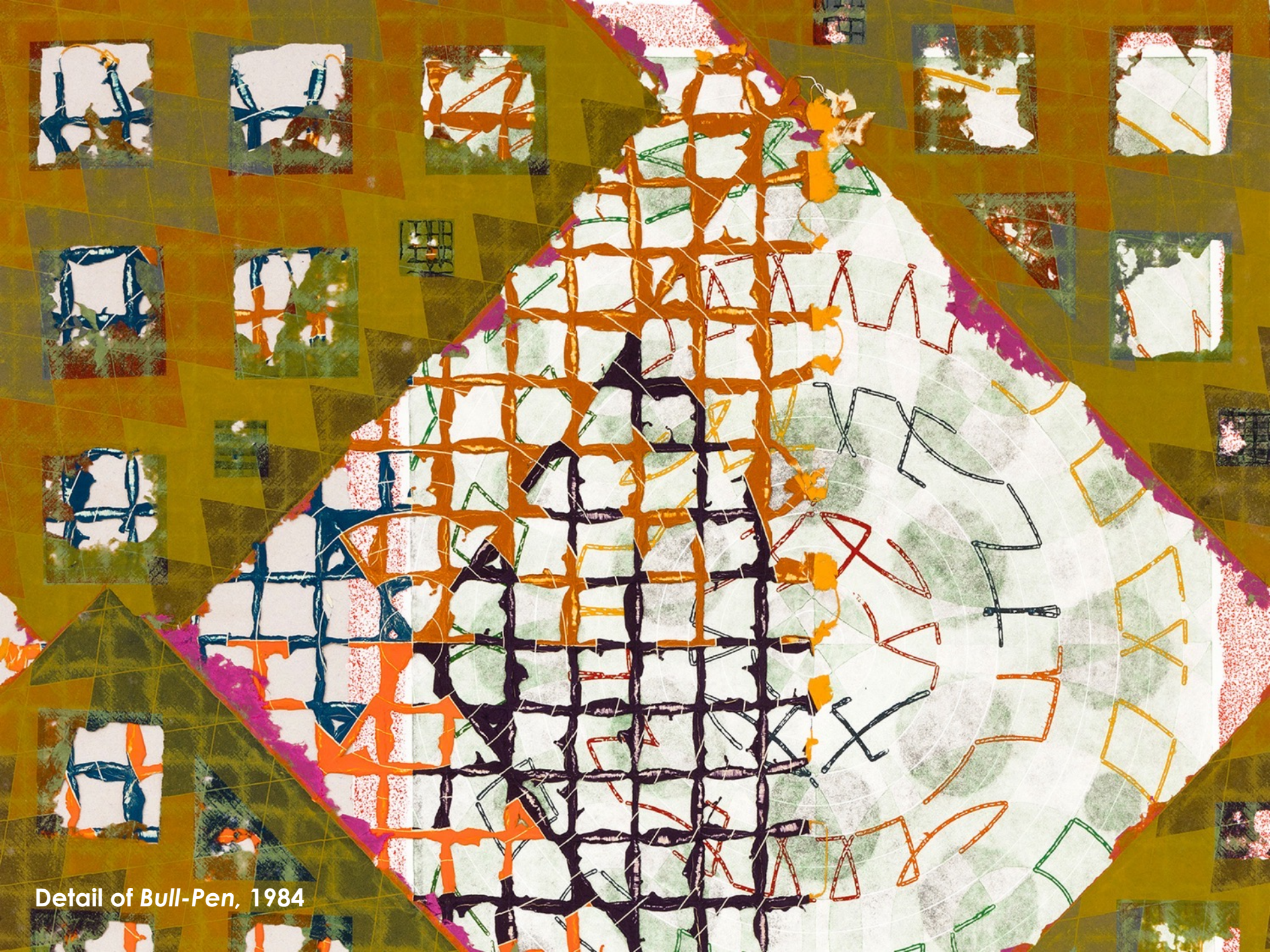
Woodcut, etching, aquatint,  
collage on handmade paper

Print size: 40.25 x 40.5 inches

Frame size: 43.63 x 45 inches

Edition 31 of 46



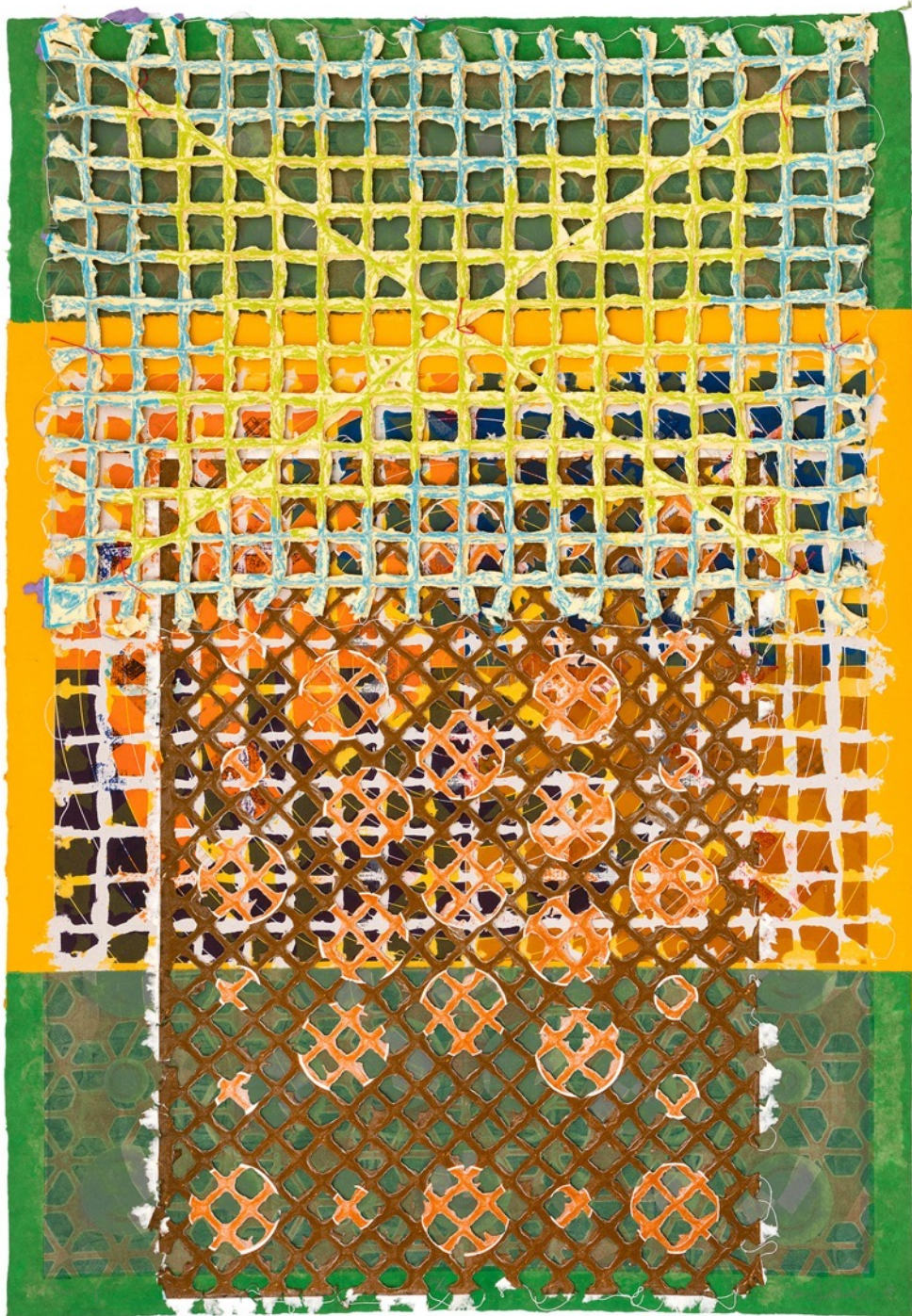


Detail of Bull-Pen, 1984



GOYA CONTEMPORARY  
GOYA GIRL PRESS

Installation view of Alan Shields: *Of His Time and Ahead Of His Time* at Goya Contemporary Gallery



**Alan Shields**

*Gas-Up*, 1984

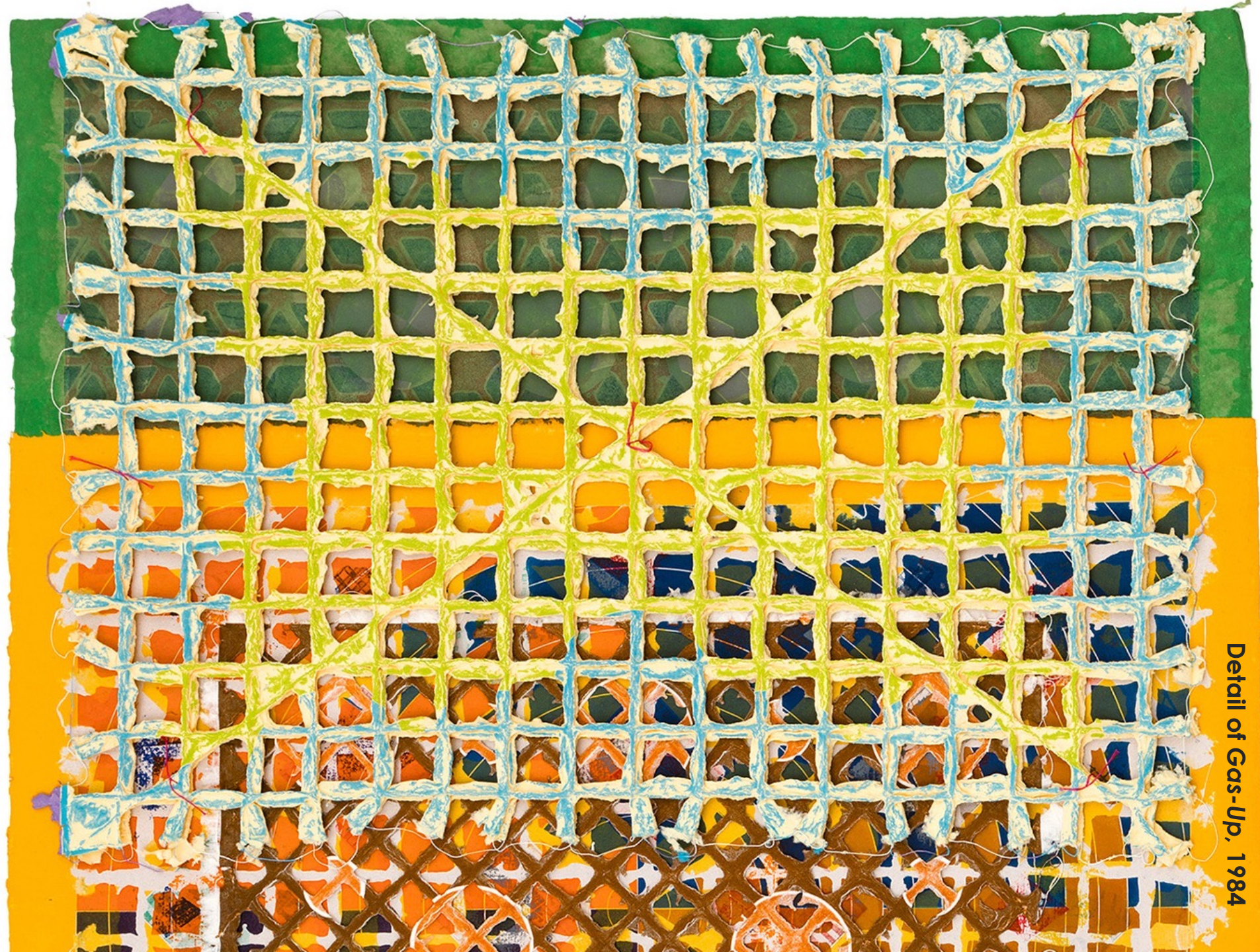
Woodcut, etching, aquatint, relief,  
knotting, collage on handmade paper

Print size: 56.5 x 40.5 inches

Frame size: 60 x 43.5 inches

Edition 20 of 46

Detail of Gas-Up, 1984



*Of His Time and Ahead Of His Time*  
Alan Shields



Installation view of *Alan Shields: Of His Time and Ahead Of His Time* at Goya Contemporary Gallery



**Alan Shields**

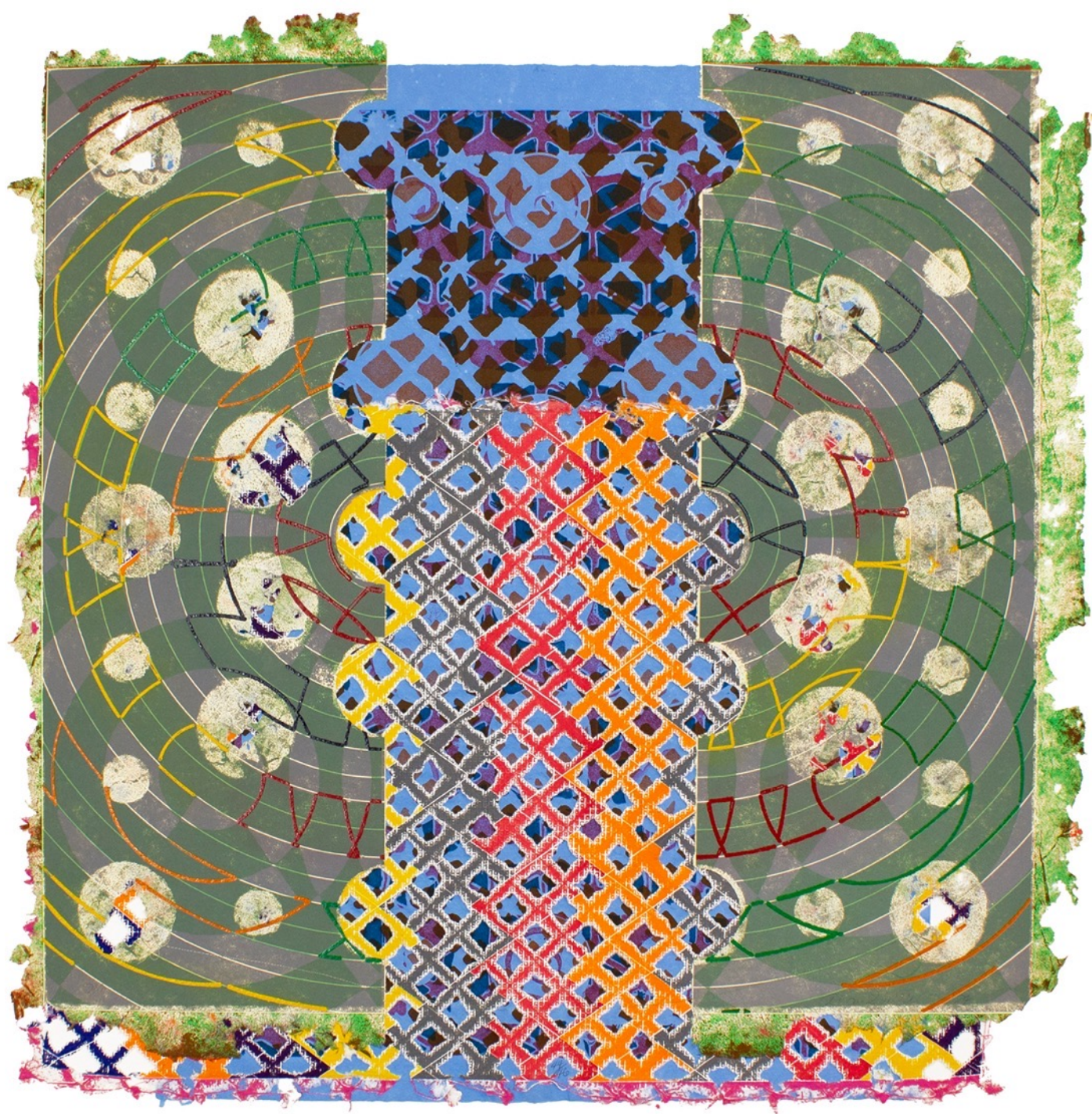
*Odd-Job*, 1984

Woodcut, etching, relief, stitching,  
collage on handmade paper

Print size: 41.5 x 41.5 inches

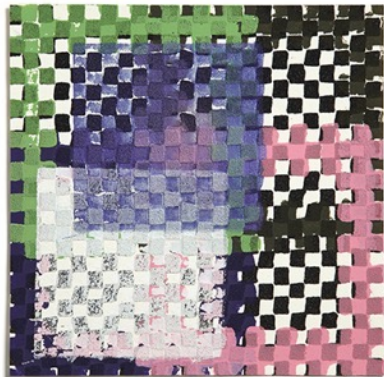
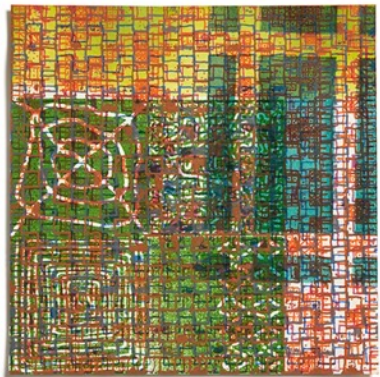
Frame size: 45 x 44 inches

Edition 44 of 46



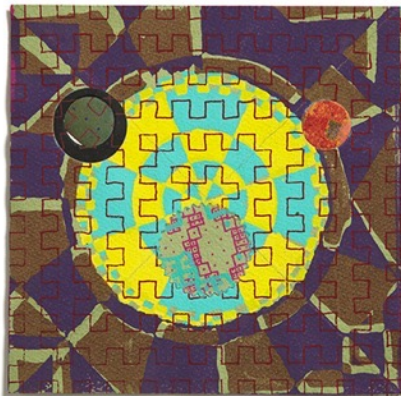
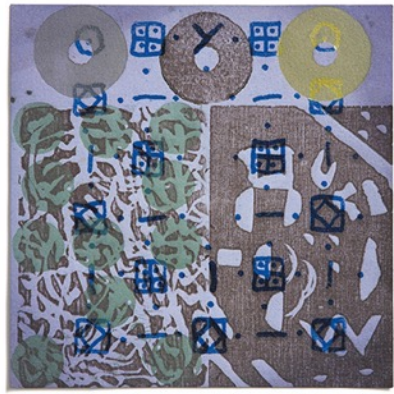
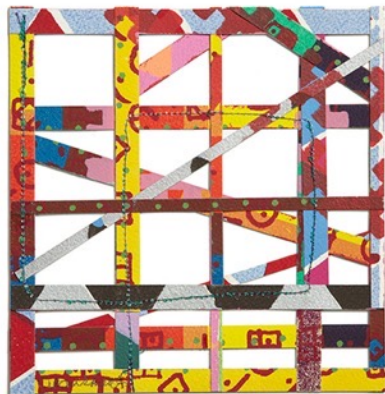


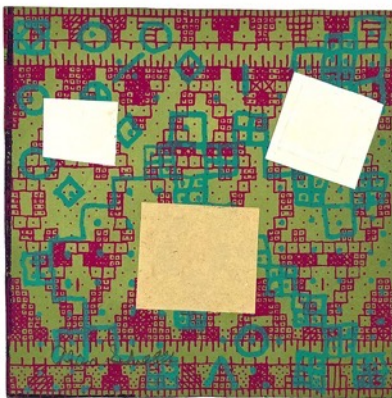
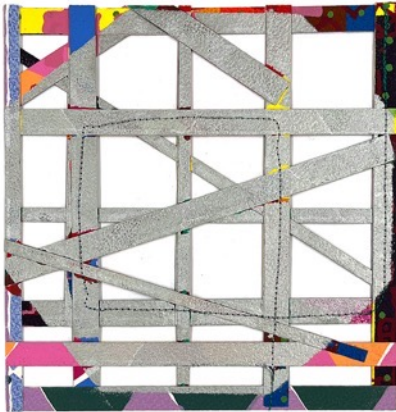
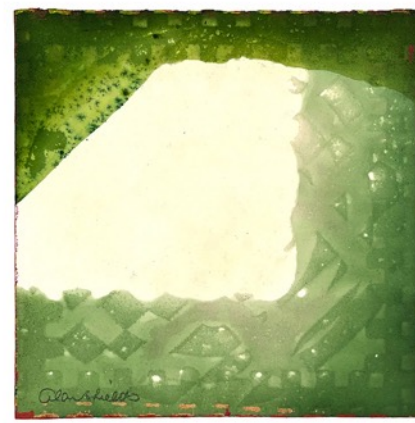
Installation view of *Alan Shields: Of His Time and Ahead Of His Time* at Goya Contemporary Gallery



**Alan Shields**

*The Incestuous Kids*, 1973  
Printed on Arches Cover, in dyeing,  
relief printing, lithograph, serigraph,  
flocking and glitter, some with die-  
cutting, stitching and collage by  
stitching  
8 x 8 inches each  
Edition 17 of 25





Verso of *The Incestuous Kids*, 1973



**Alan Shields**

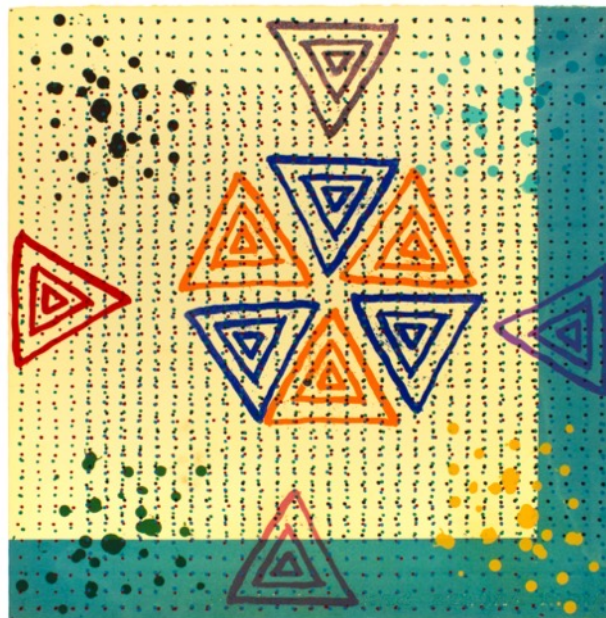
*The International Teddy Bear, E9, 1973*

Silkscreen and dye

Print size: 21.75 x 22 inches

Frame size: 24.38 x 23.88 inches

Edition 60 of 75



**Alan Shields**

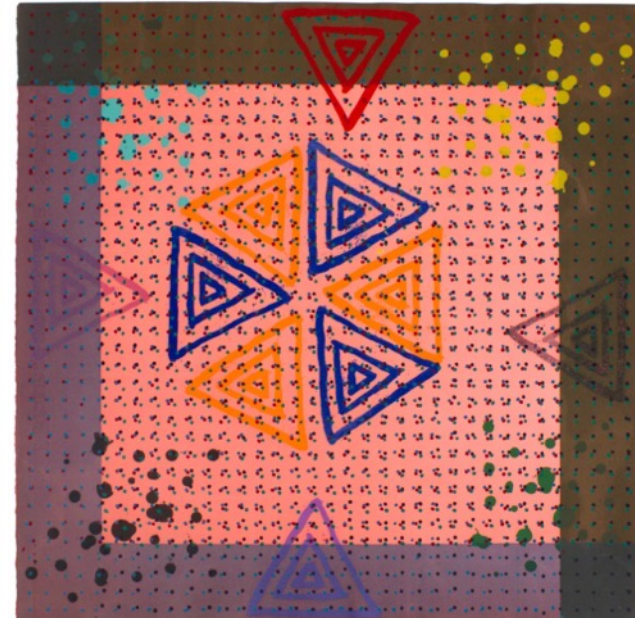
*The International Teddy Bear, E10, 1973*

Silkscreen and dye

Print size: 21.75 x 22 inches

Frame size: 24.38 x 23.88 inches

Edition 61 of 75



**Alan Shields**

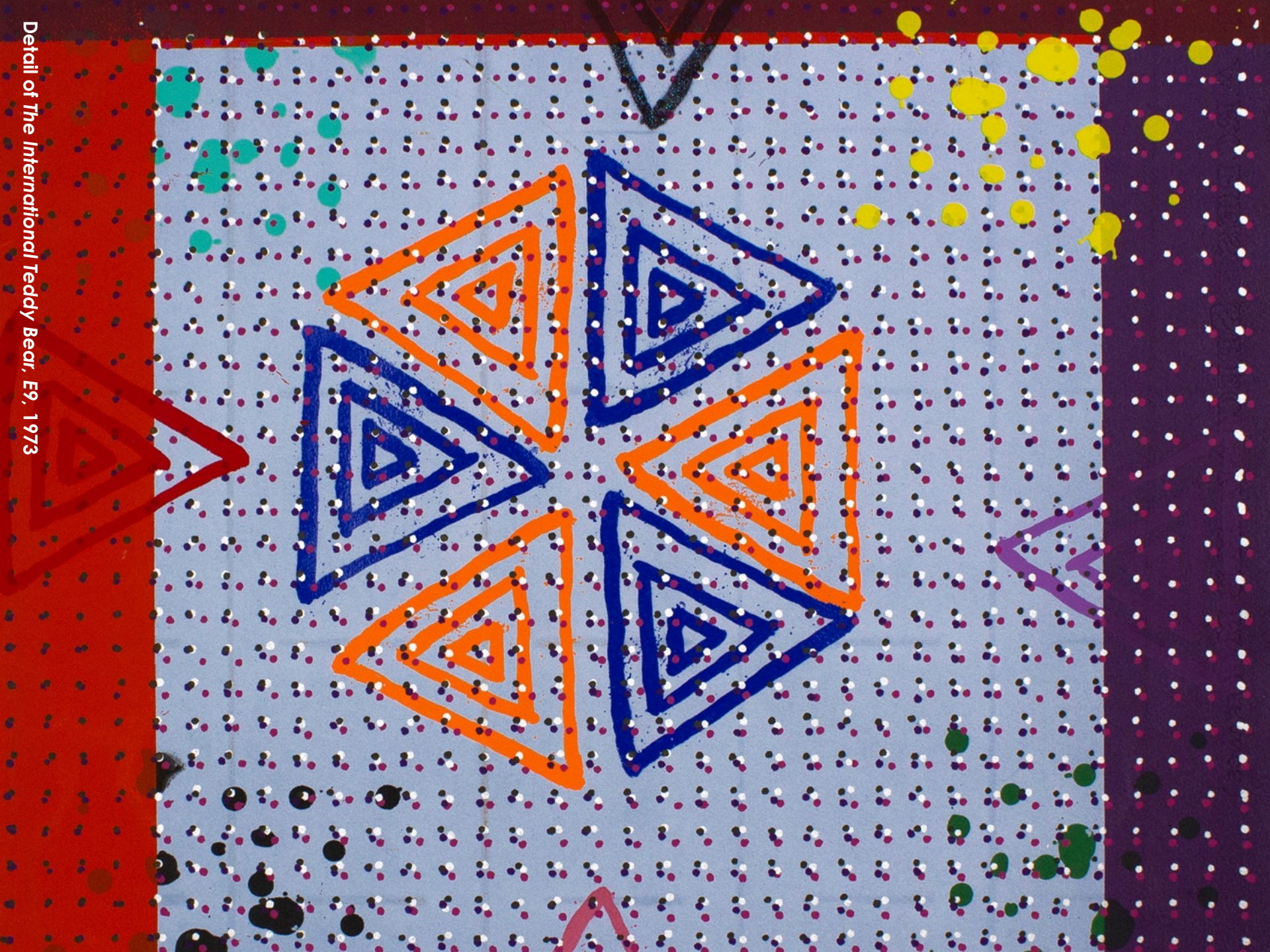
*The International Teddy Bear, B5, 1973*

Silkscreen and dye

Print size: 21.75 x 22 inches

Frame size: 24.38 x 23.88 inches

Edition 20 of 75



Detail of *The International Teddy Bear*, E9, 1973

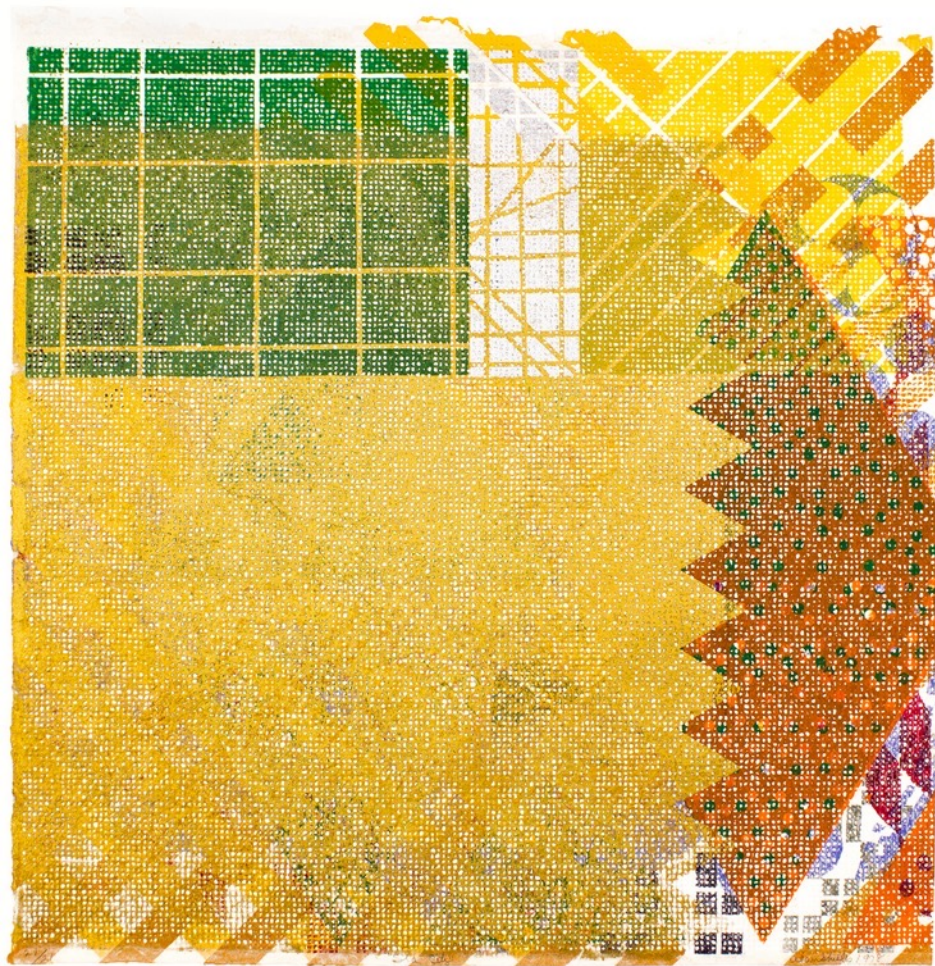


Installation view of Alan Shields: *Of His Time and Ahead Of His Time* at Goya Contemporary Gallery

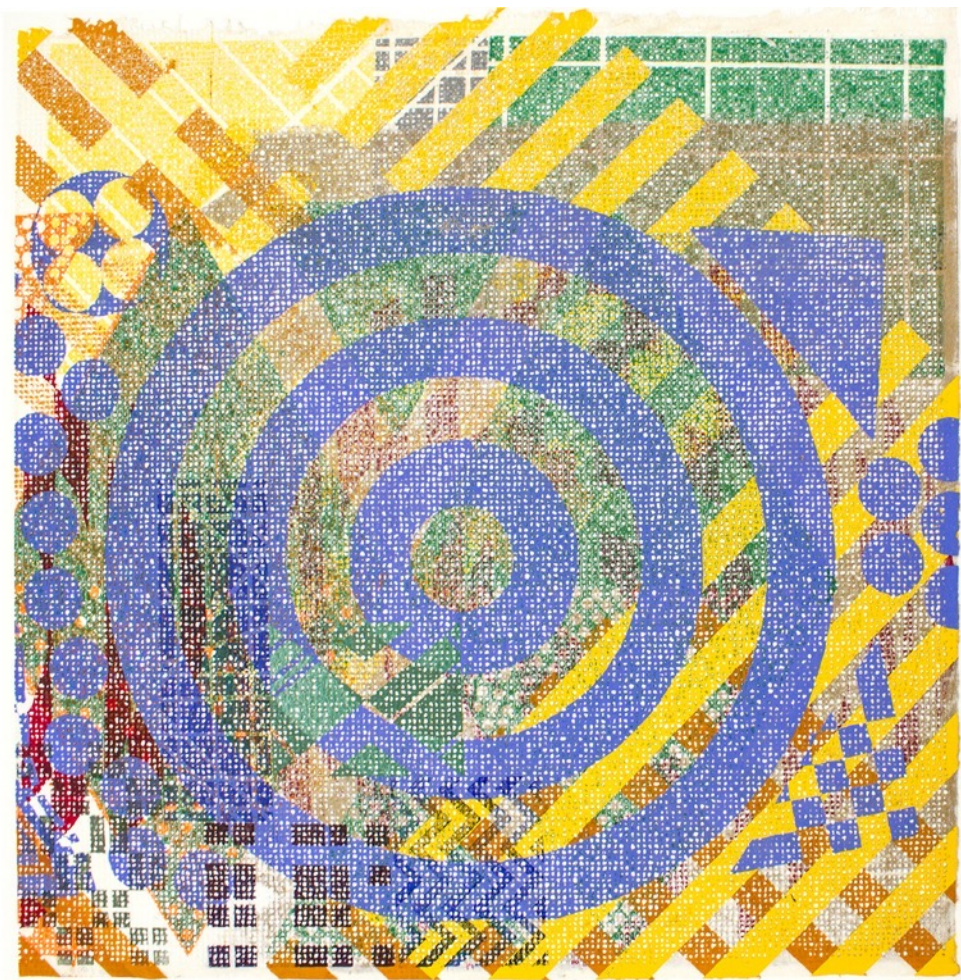


**Alan Shields**  
*Jackie Laugh*, 1974  
Paper pulp print  
14 x 14 inches  
Edition 11 of 21





RECTO



VERSO

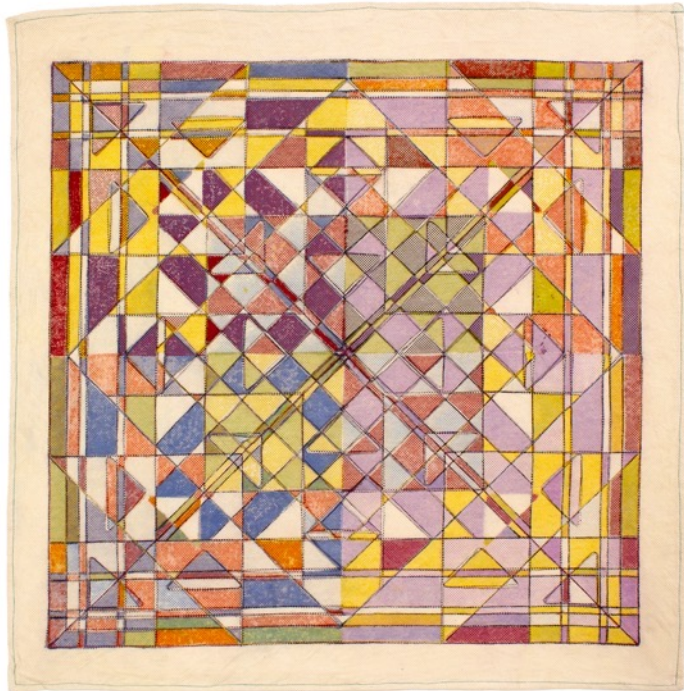
**Alan Shields**

*Sea City*, 1978

Two-sided relief embossed silkscreen on Japanese paper

25 x 24.5 inches

Edition 21 of 21



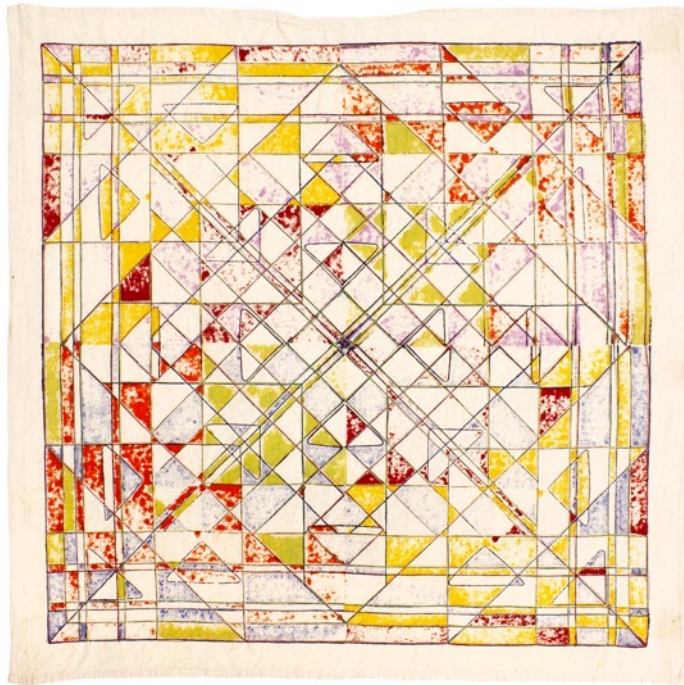
Left to Right, Top to Bottom

**Alan Shields**

*Good Brother*, 1980  
Cotton dyes, woodblock on unbleached cotton muslin  
Print size: 27.5 x 27.5 inches  
Frame size: 30.88 x 30.25 inches  
Edition 10 of 19

**Alan Shields**

*Good Brother*, 1980  
Cotton dyes, woodblock on unbleached cotton muslin  
Print size: 27.5 x 27.5 inches  
Frame size: 30.88 x 30.25 inches  
Edition 14 of 19

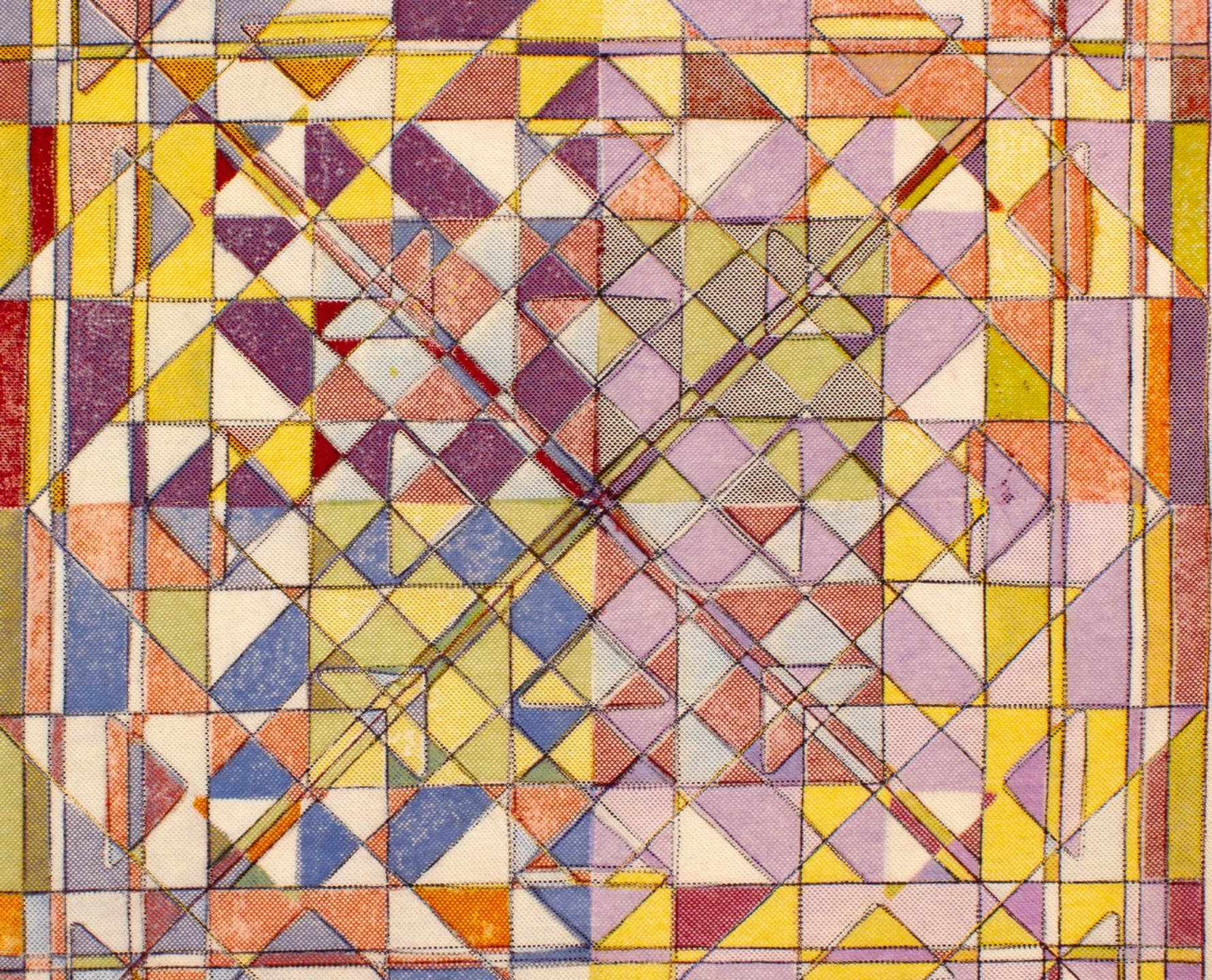


**Alan Shields**

*Thin Good Brother (India)*, 1980  
Cotton dyes, woodblock, stitching on mosquito netting and unbleached cotton muslin  
Print: 27.5 x 27.5 inches  
Frame: 30.88 x 30.25 inches  
Edition 22 of 26

**Alan Shields**

*Thin Good Brother (India)*, 1980  
Cotton dyes, woodblock, stitching on mosquito netting and unbleached cotton muslin  
Print: 27.5 x 27.5 inches  
Frame: 30.88 x 30.25 inches  
Edition 24 of 26



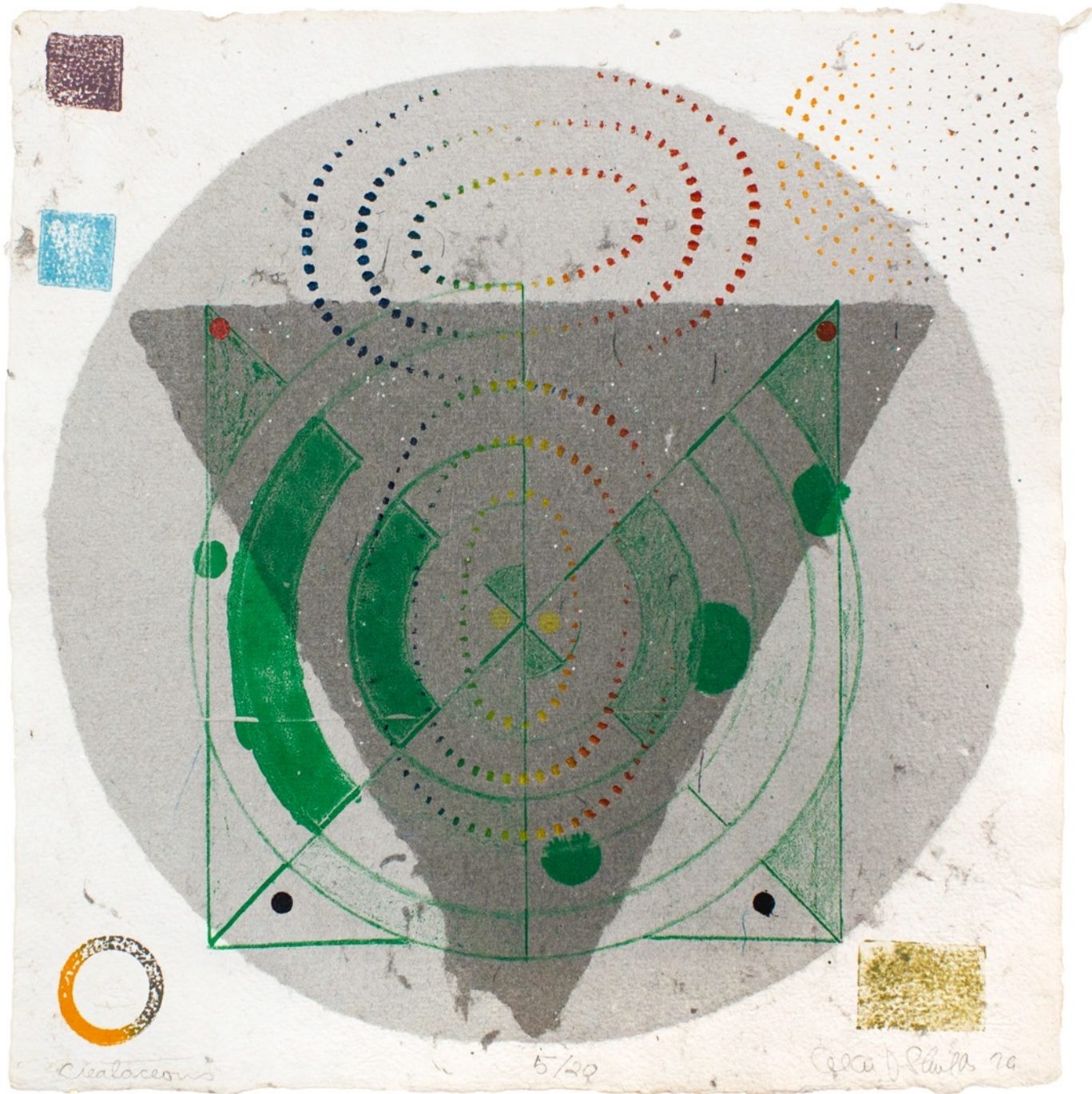


*Of His Time*

Installation view of Alan Shields: *Of His Time and Ahead Of His Time* at Goya Contemporary Gallery



**Alan Shields**  
*Dish #13*, 1974  
Paper pulp print  
19.5 x 19.5 inches  
Edition 5 of 11



**Alan Shields**  
*Cretaceous*, 1979  
Lithograph and rubber stamp  
on handmade paper  
14 x 14 inches  
Edition 5 of 20

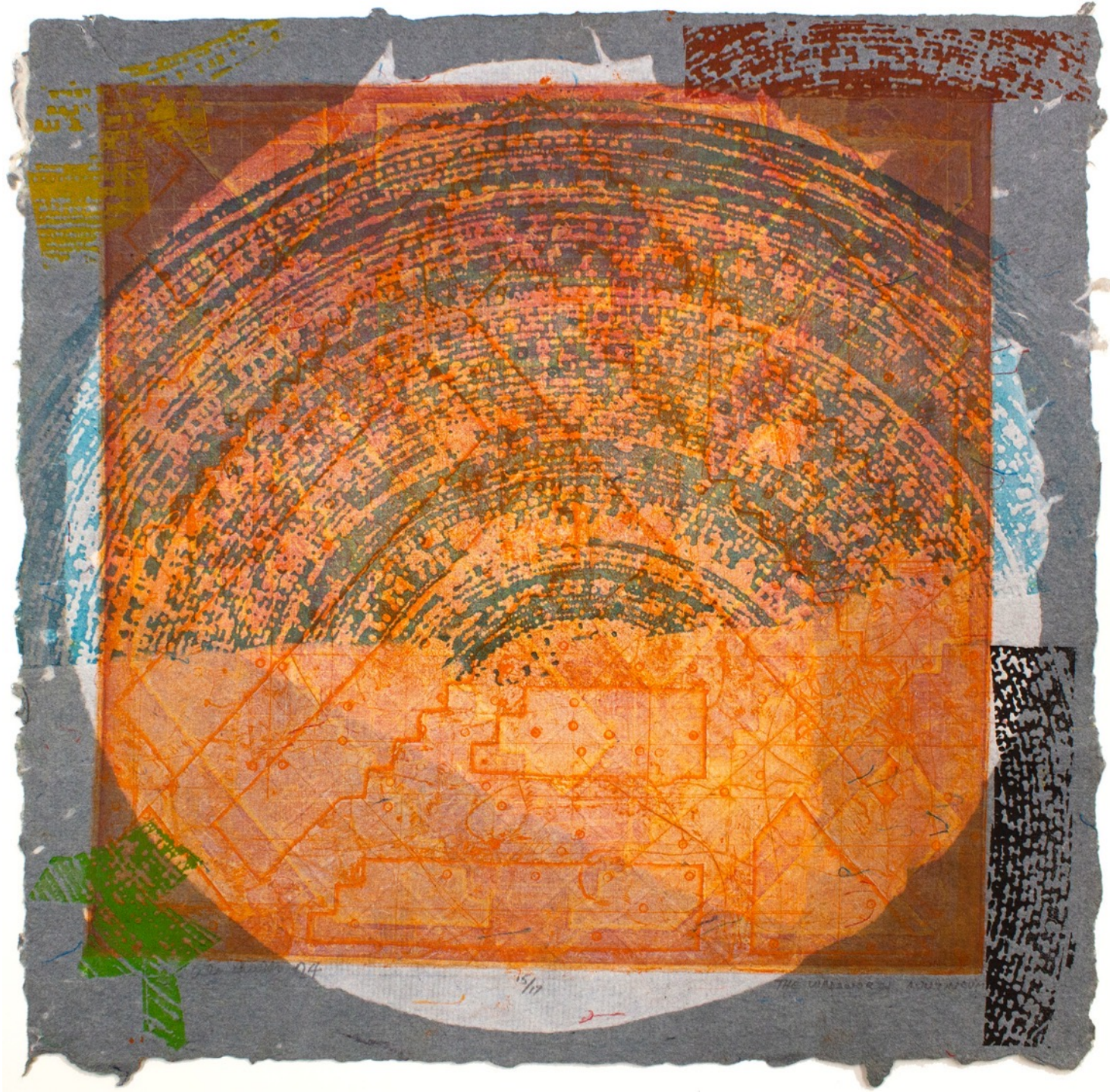
**Alan Shields**

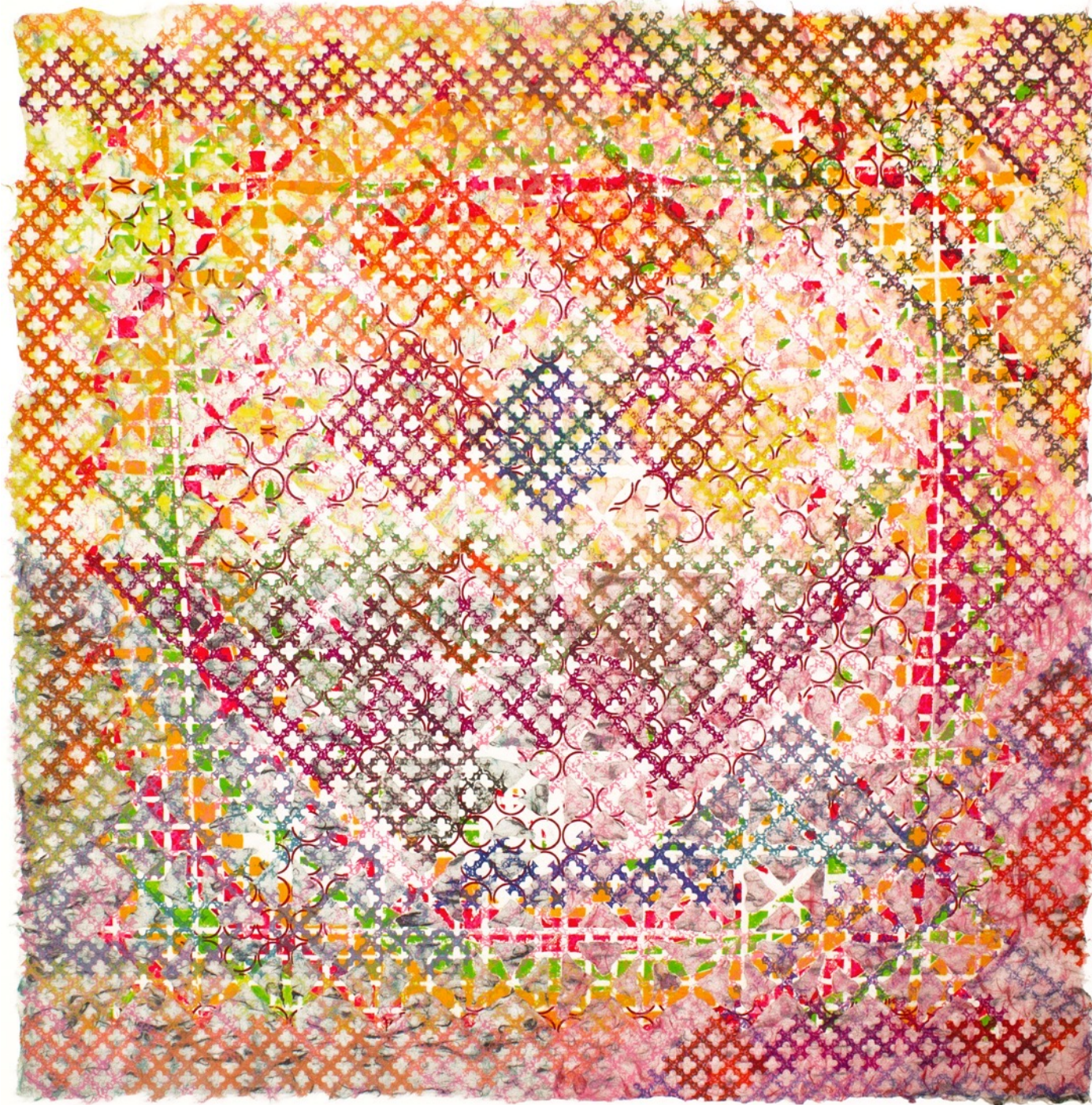
*Wadsworth Atheneum, 1979*

Etching and embossing with  
relief on handmade paper

14 x 14 inches

Edition 15 of 17





**Alan Shields**  
*Kissing the Tundra*, 1989  
Engraving, relief on  
handmade paper  
28 x 28 inches  
Edition 9 of 24



# GOYA CONTEMPORARY GOYA-GIRL PRESS

Availability of artworks are not guaranteed, and prices are subject to change.

All images are © the Artist and/or Goya Contemporary Gallery. No image may be used, copied, printed, in any way without permission.