

GOYA  
CONTEMPORARY  
GALLERY

**THE  
ARMORY  
SHOW**  
2025





## **GOYA CONTEMPORARY GALLERY**

### **BOOTH 426**

#### **The Armory Show**

Javits Center

429 11th Avenue, New York, NY 10001

[www.thearmoryshow.com](http://www.thearmoryshow.com)

#### **VIP Preview Day**

Thursday, September 4, 2025

#### **Public Days**

Friday, September 5, 2025, 11 am - 7pm

Saturday, September 6, 2025, 11 am - 7pm

Sunday, September 7, 2025, 11 am - 5pm

#### **FOR INQUIRIES:**

[galler@goyacontemporary.com](mailto:galler@goyacontemporary.com)

Office: 410-366-2001

Fair: 443-850-1015

#### **Goya Contemporary | Goya-Girl Press**

3000 Chestnut Avenue, Mill Centre #214, Baltimore, MD 21211

[www.goyacontemporary.com](http://www.goyacontemporary.com)

Instagram: [@goya\\_contemporary\\_gallery](https://www.instagram.com/goya_contemporary_gallery)

## Exploring the Intersection of Structure and Expression in System-Based Artworks

Our 2025 Armory Show presentation brings together works by Alfred Jensen, Amalie Rothschild, Joyce J. Scott, and Madeleine Keesing, to explore how systems—mathematical, linguistic, cultural, or social—shape visual expression and meaning.

Each artist engages structured methodologies as a foundation for intuitive, emotional, and conceptual exploration, revealing the profound ways systems inform contemporary and historical art practices.

Alfred Jensen (1903–1981) fused numerology, ancient cosmologies, and abstraction to create vibrant compositions that bridge logic and intuition. His use of the Fibonacci sequence, astrology, and the I Ching reflects a belief in systems as both formal structure and metaphysical language.

Amalie Rothschild (1916–2001) worked across painting and sculpture, integrating organic and mathematical forms. Her structurally innovative works emphasize balance, tension, and spatial clarity, challenging gendered expectations and asserting system-based abstraction as a site of discovery and tactile engagement.

Joyce J. Scott (b. 1948) employs the peyote stitch—a meticulous off-loom bead weaving technique—to explore systems of race, identity, and power. A MacArthur 'Genius' Fellow, her sculptures interrogate social structures through mathematics and craft, merging political urgency with visual complexity.

Madeleine Keesing (b. 1941) creates intricate, meditative paintings built from accumulated marks and repetitive gestures. Her work balances control and chance, using structure as a gateway to spontaneity, inviting quiet contemplation and sensory depth.

Together, these artists reveal how systems function not as constraints, but as catalysts for meaning—transforming color, form, and content into layered visual languages that resonate across time, identity, and experience.



# The Earth-Plate = Ti Phan.

N. The House of the Abyssimal N.E. The House of the Awakening. E.

The House of the Joyous N.W. The House of the Creative

The House of Keeping Still S.E. The House of the Receptive

8	6	7	6	7	6	5	6	6	7	8	5	6	7	6
7	7	4	5	6	5	6	5	6	5	4	7	6	5	8
6	6	6	5	4	3	5	4	4	3	5	6	4	4	5
5	5	3	5	2	3	4	3	5	2	4	3	5	7	6
6	4	4	3	4	1	3	2	1	4	2	5	3	6	7
7	5	5	2	3						4	2	4	5	6
6	6	4	4	1						3	4	6	6	7
7	6	5	4	3						2	3	4	5	6
6	5	3	3	2						4	3	5	5	7
7	6	5	5	1						2	5	4	6	6
6	5	6	2	3	1	4	3	2	4	1	4	5	7	7
7	4	4	4	3	5	2	4	3	4	5	2	6	6	8
8	7	5	3	4	6	5	5	4	6	5	4	3	5	7
5	6	5	4	7	6	5	6	5	6	5	6	7	4	6
7	6	7	8	5	6	7	7	8	7	6	7	6	7	5

S. The House of the Awakening. W.S. The House of the Gentle

The Outside Square

Alfred Jensen  
Dec. 11 - 1970

Alfred Jensen

The Outside Square, The Earth Plate, 1970

Oil on canvas

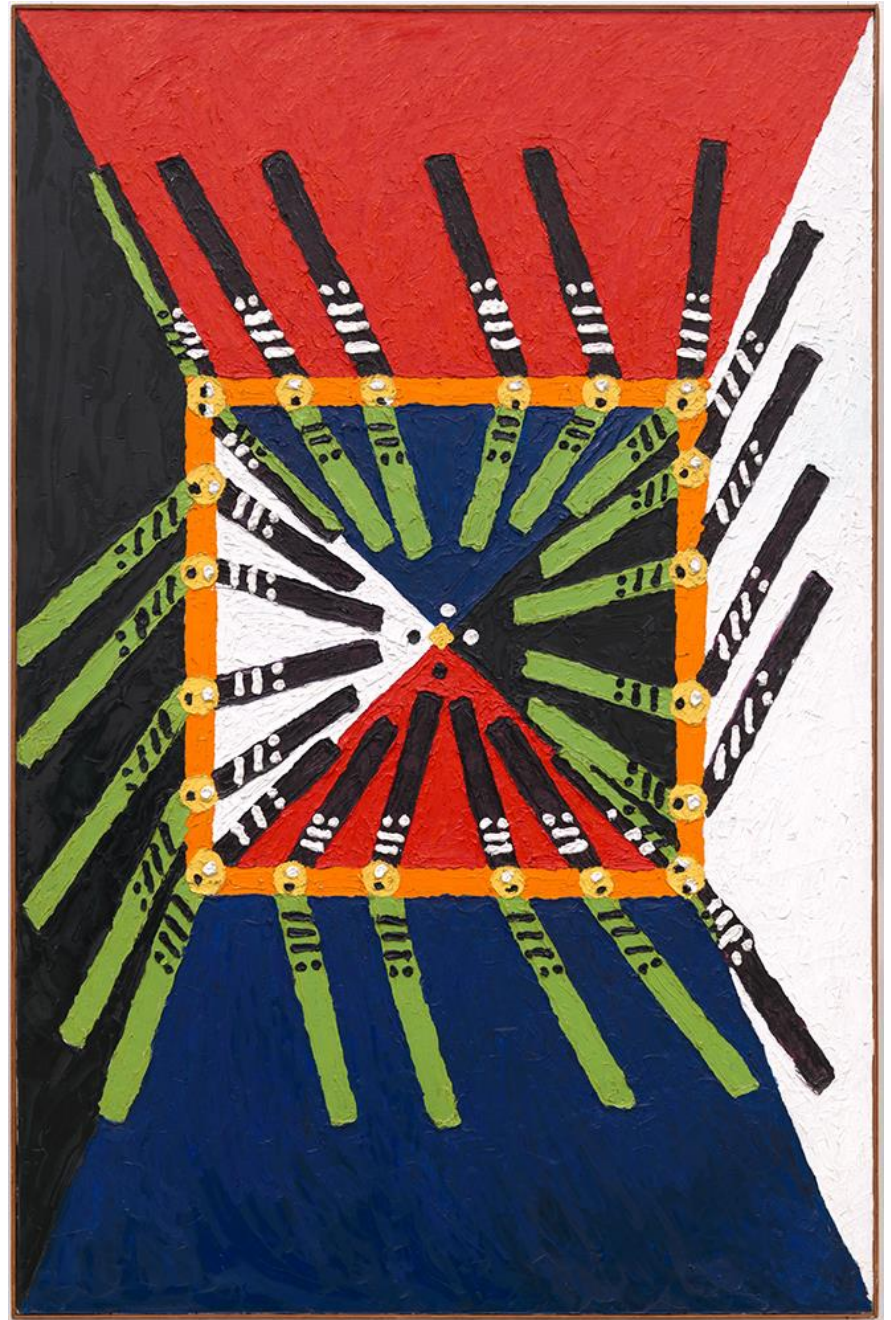
25 x 20 inches



**Alfred Jensen**  
*Mayan Temple, Per VI: Uxmal*, 1962  
Oil on canvas  
76 x 50 inches



**Alfred Jensen**  
*Mayan Temple Per IV, Teotihuacan, 1962*  
Oil on canvas  
76 x 50 inches





**Alfred Jensen**

*9 Precession Years of 260 Days, 1976*

Oil on canvas

23 x 30 inches

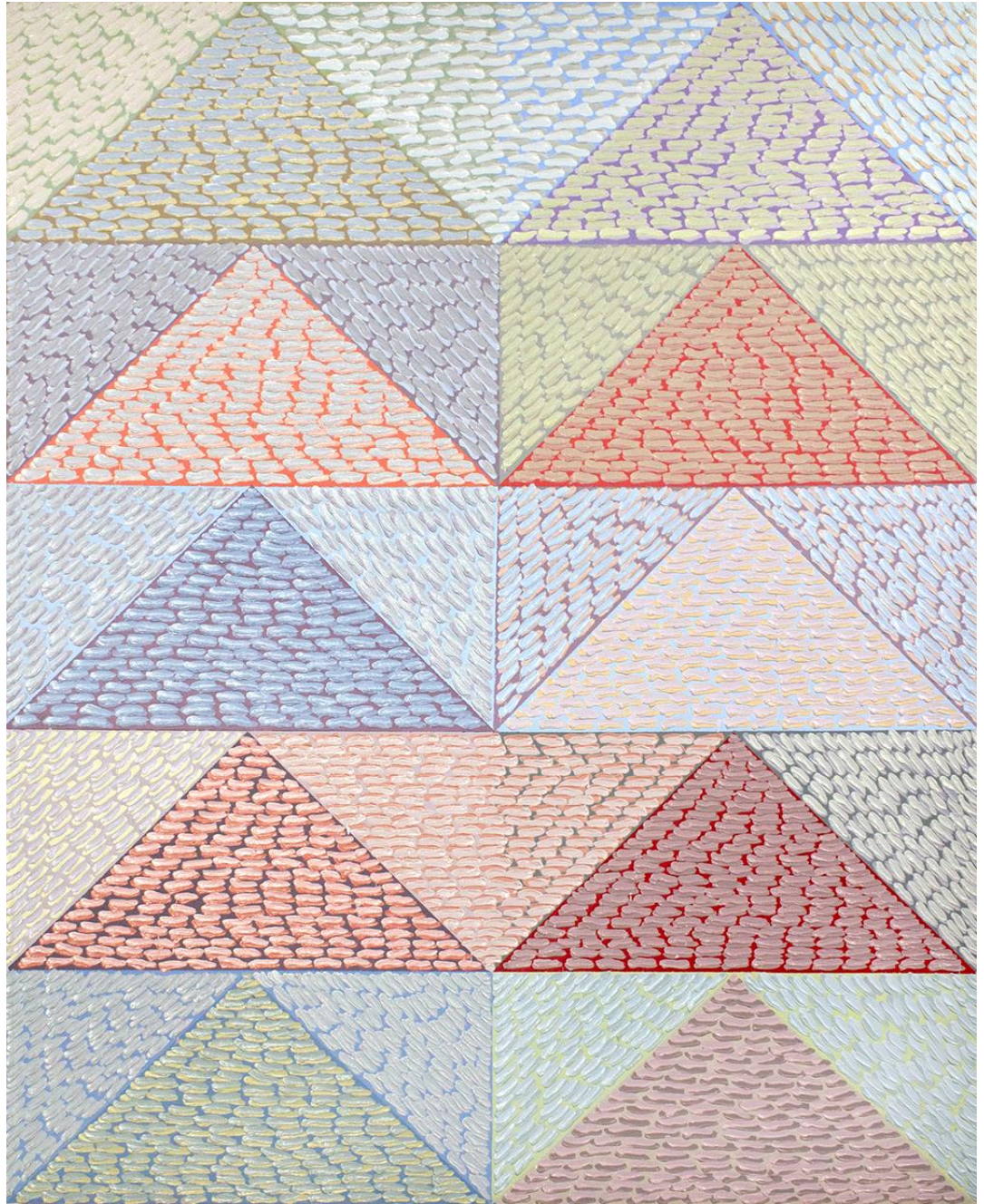




**Alfred Jensen**  
*Reciprocal Relation, Mercury, 1969*  
Oil on canvas  
66.2 x 33.2 inches



**Madeleine Keesing**  
*Untitled*, 1981  
Oil on canvas  
60 x 48 inches







**Madeleine Keesing**

*Horizons*, 2018

Oil on canvas

72 x 78 inches





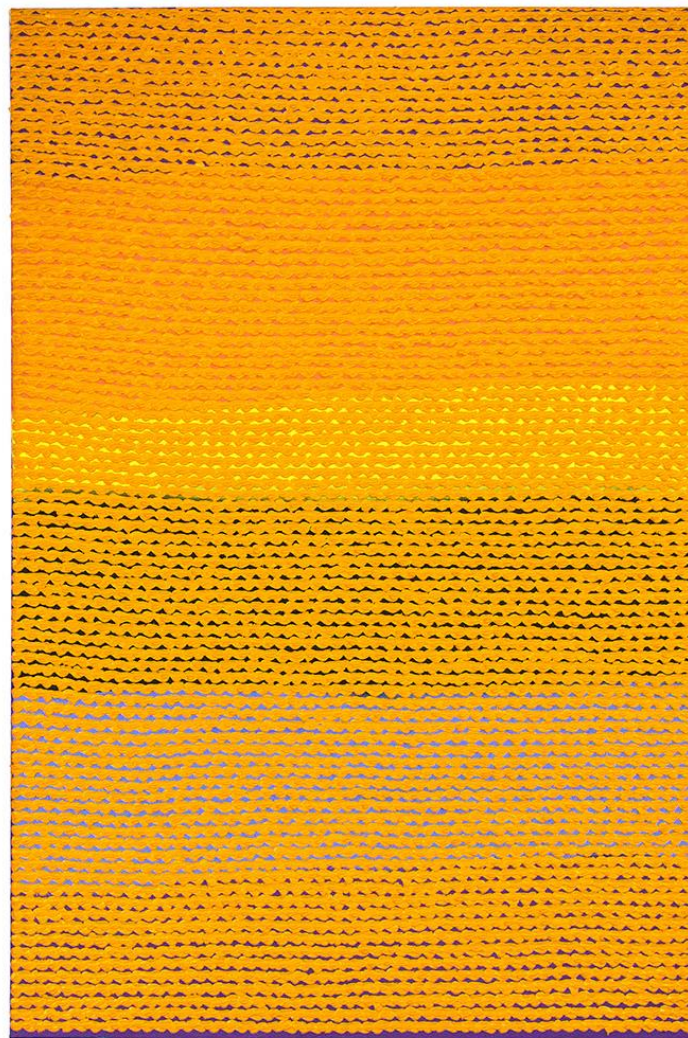
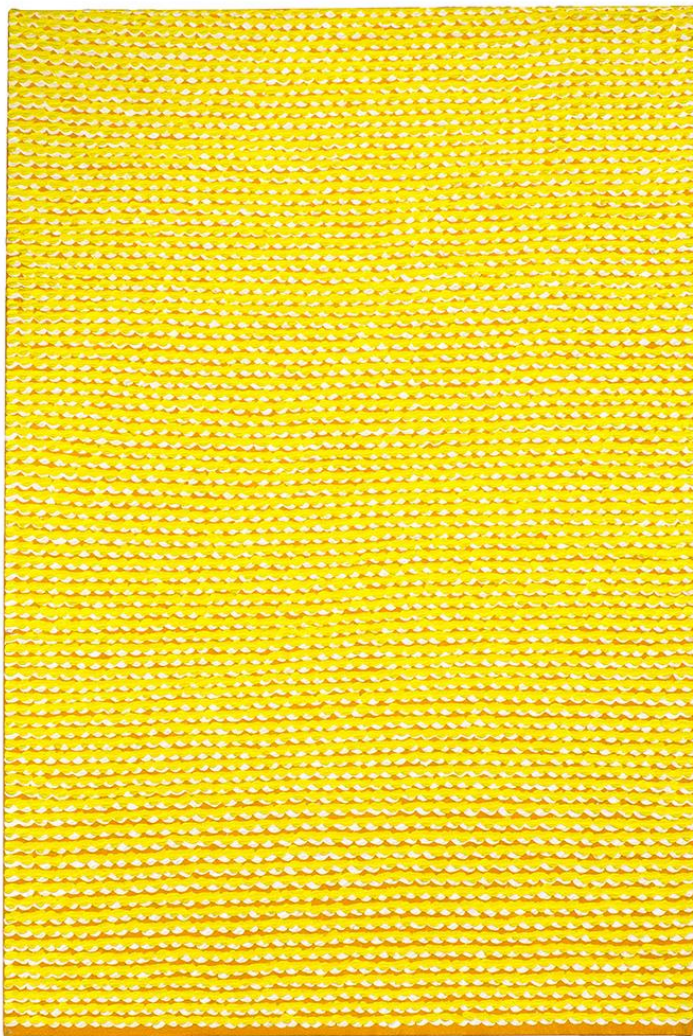
**Madeleine Keesing**

*Nonstop*, 2021

Oil on canvas

48 x 36 inches





**Madeleine Keesing**

*Untitled (Yellow and Orange), 2010*

Oil on canvas

36 x 48 inches



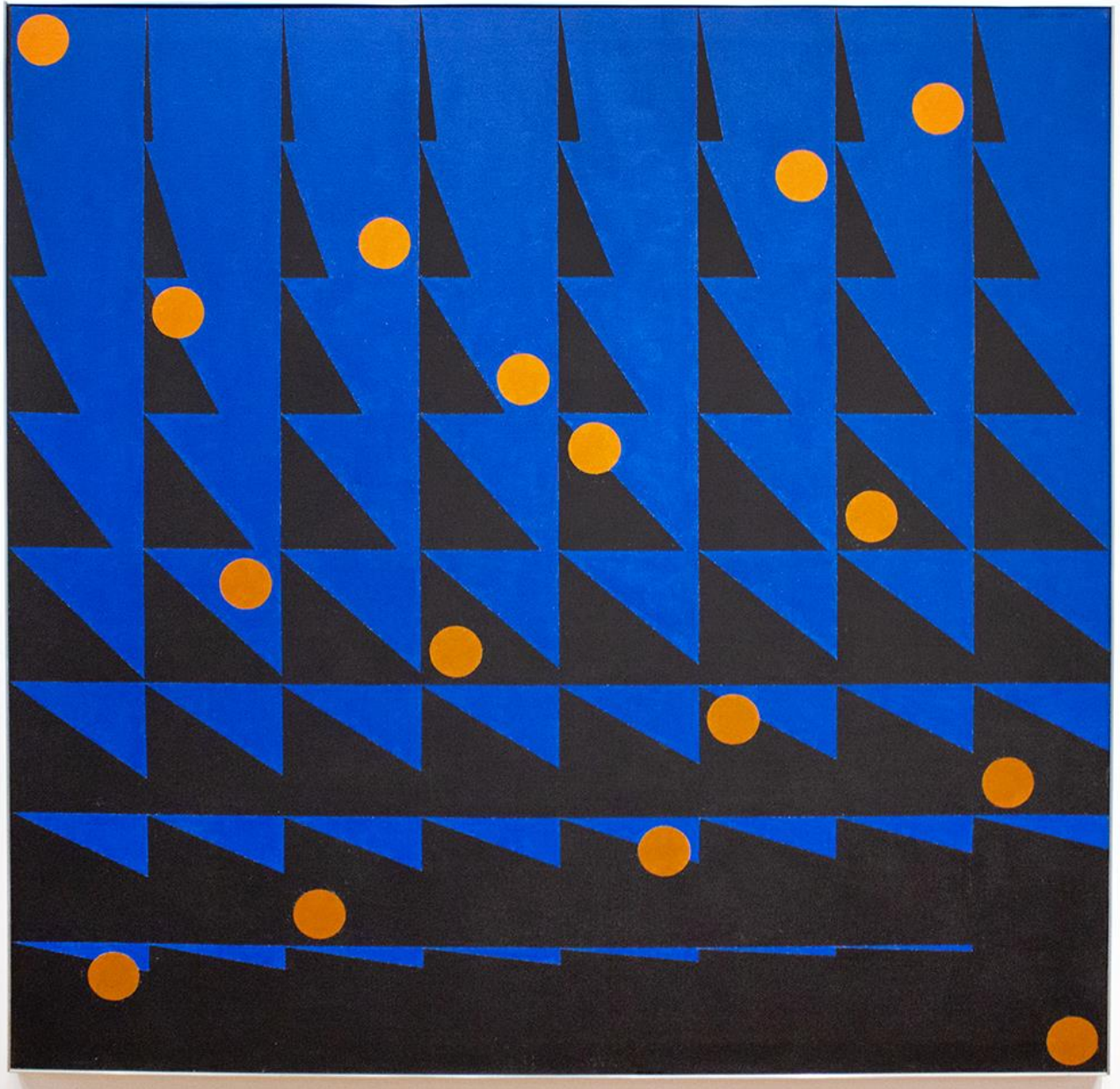
**Amalie Rothschild**

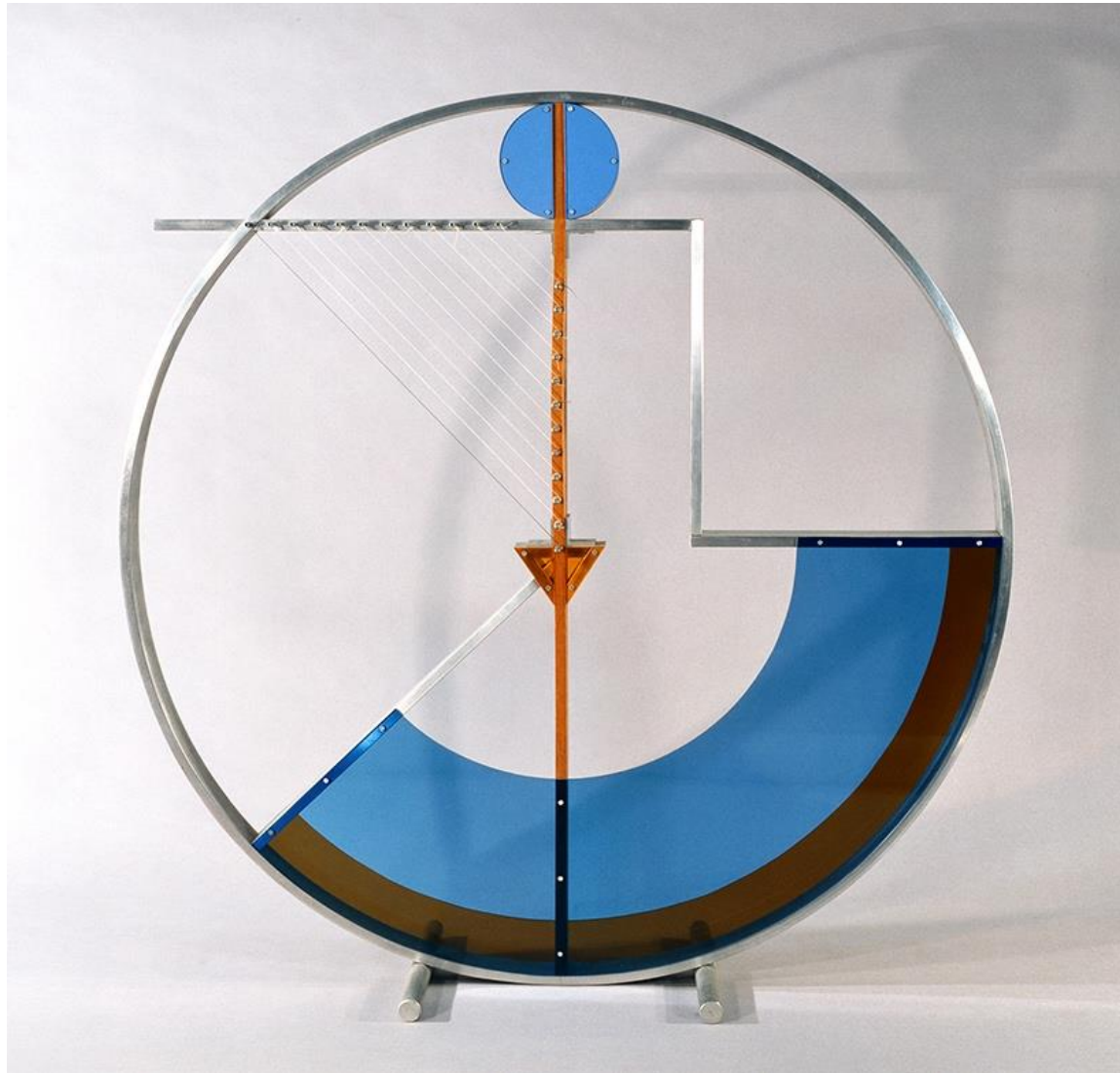
*Ripening of the Oranges in Sicily, 1968*

Acrylic on canvas

48 x 48 inches

Museum acquisition only





**Amalie Rothschild**

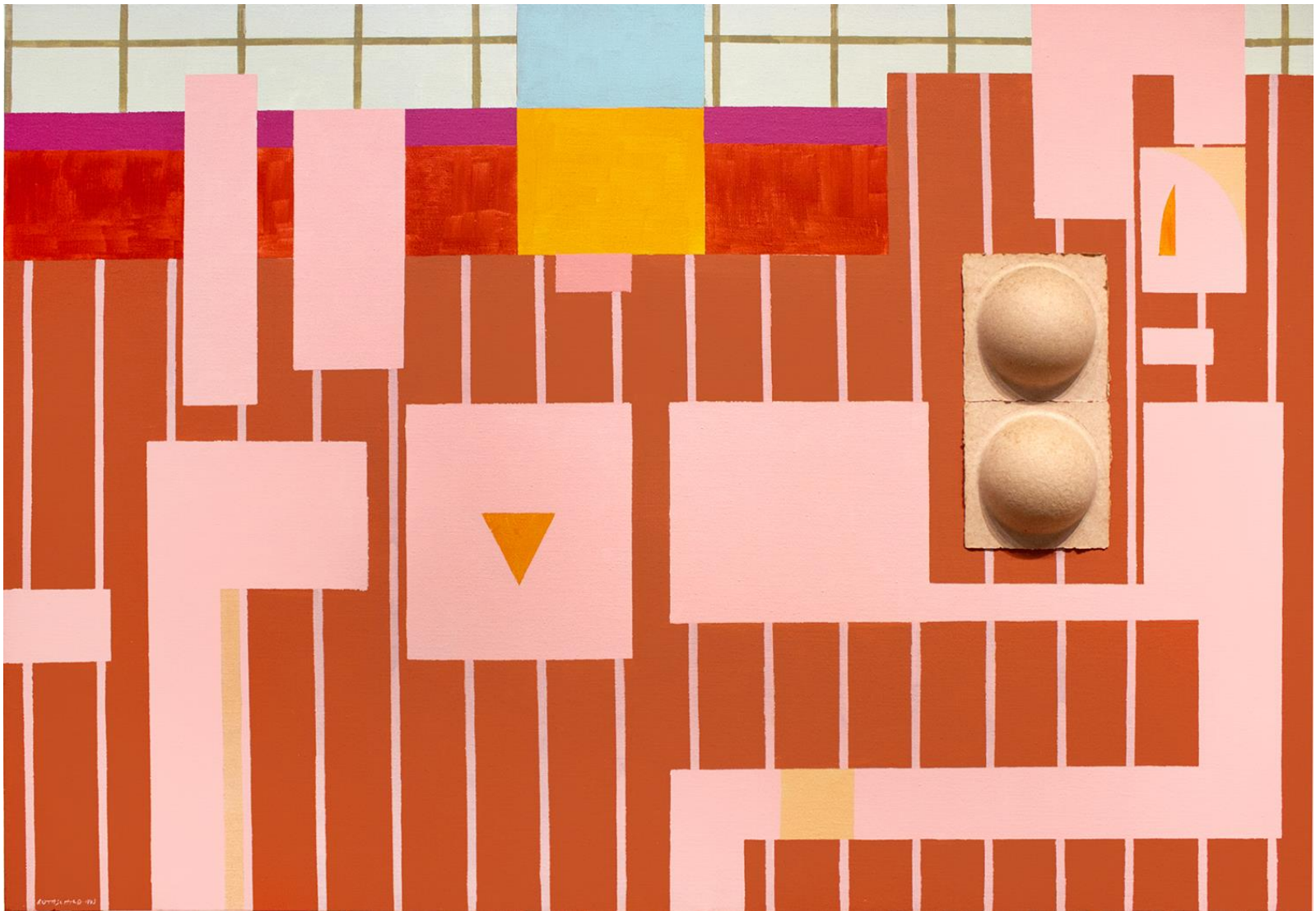
*Rondo*, 1990

Aluminum, Plexiglas, wood, steel, nylon strings

40 x 40 x 12 inches

Museum acquisition only





**Amalie Rothschild**

*Pink Nude*, 1983

Acrylic on canvas with cast handmade paper

31.25 x 45.5 inches

Museum acquisition only



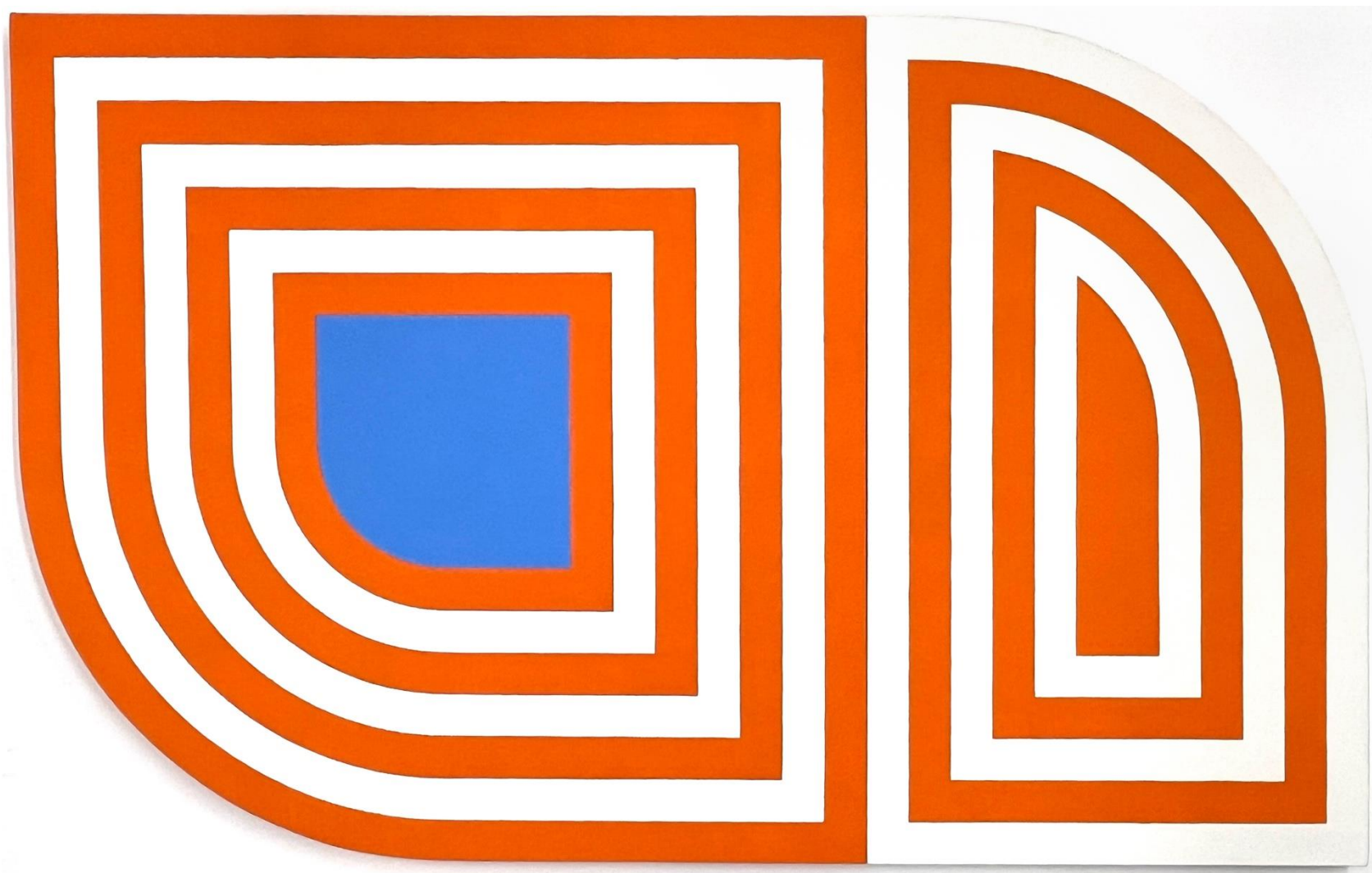
**Amalie Rothschild**

*Ego*, 1991

Steel, wood, acrylic paint

18.25 x 15 x 6 inches





**Amalie Rothschild**

*Witwaters Rand, 1977*

Acrylic on canvas

30 x 48 inches diptych

**Amalie Rothschild**  
*Antiope*, 1972  
Aluminum, Plexiglas, cotton batting  
32 x 22 inches







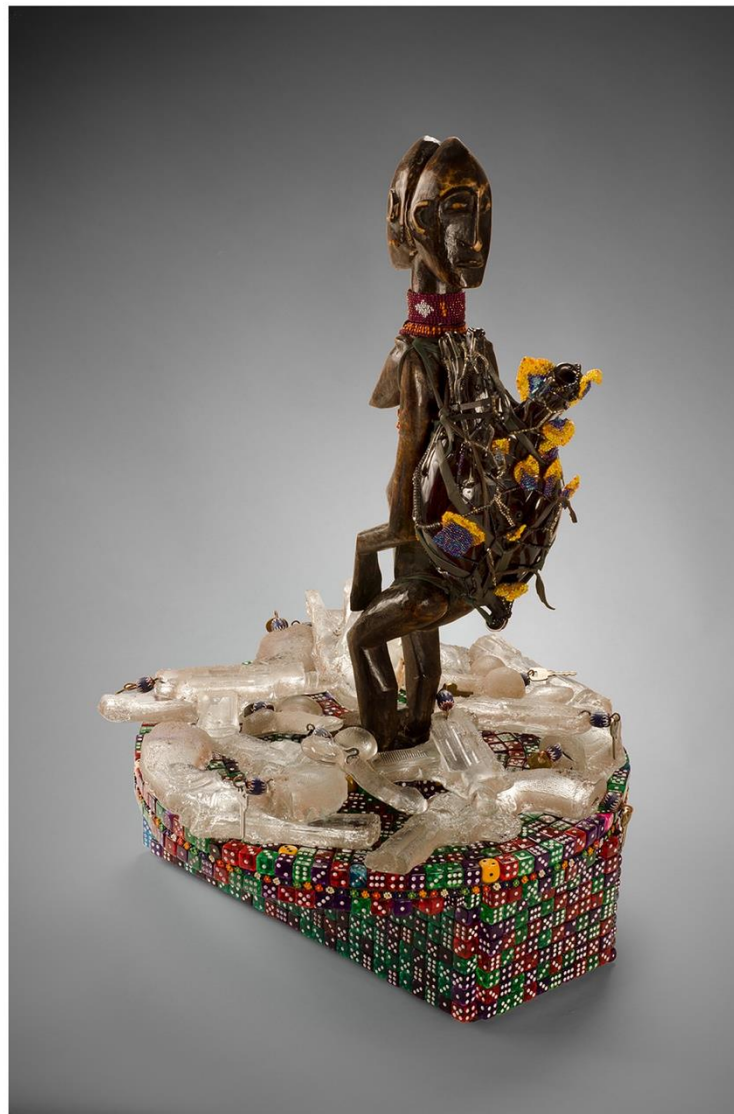
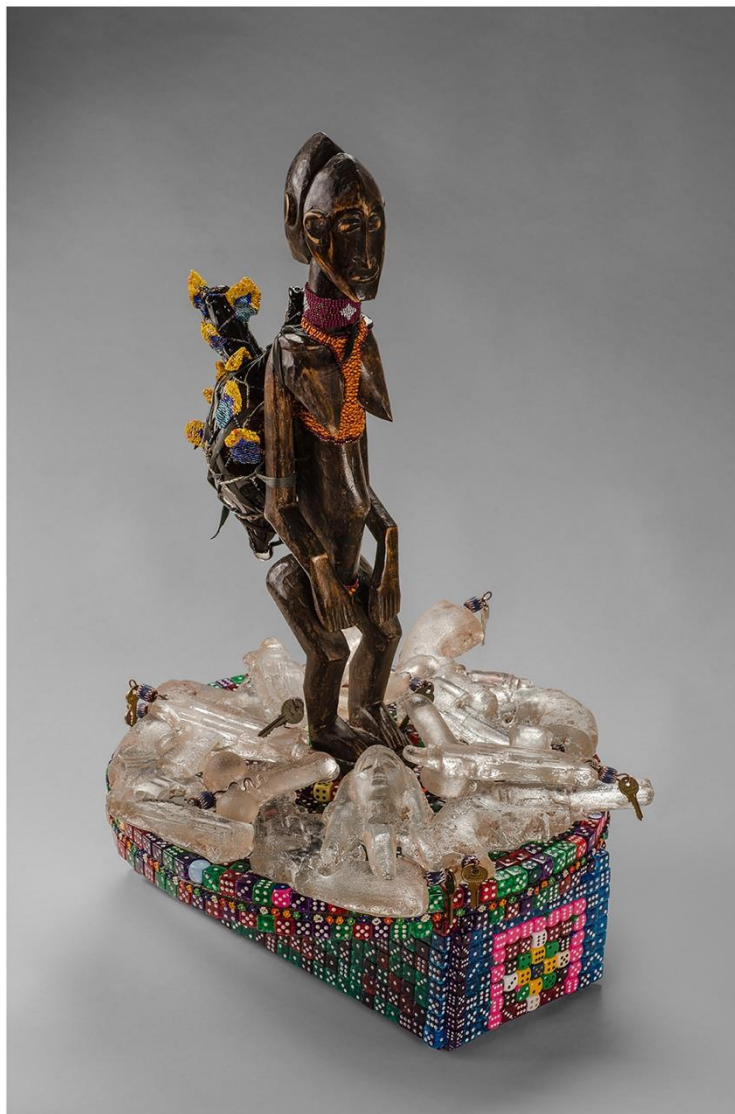
**Joyce J. Scott**

*I Call Her Name*, 2024

Plastic and glass beads, yarn, knotted fabric by Elizabeth Talford Scott,  
painted stainless steel armature

104 x 89 x 3 inches

Museum acquisition only



**Joyce J. Scott**

*War Woman I*, 2014

African sculpture, dice, glass and plastic beads, thread, wire, cast glass, keys

30 x 18 x 18 inches





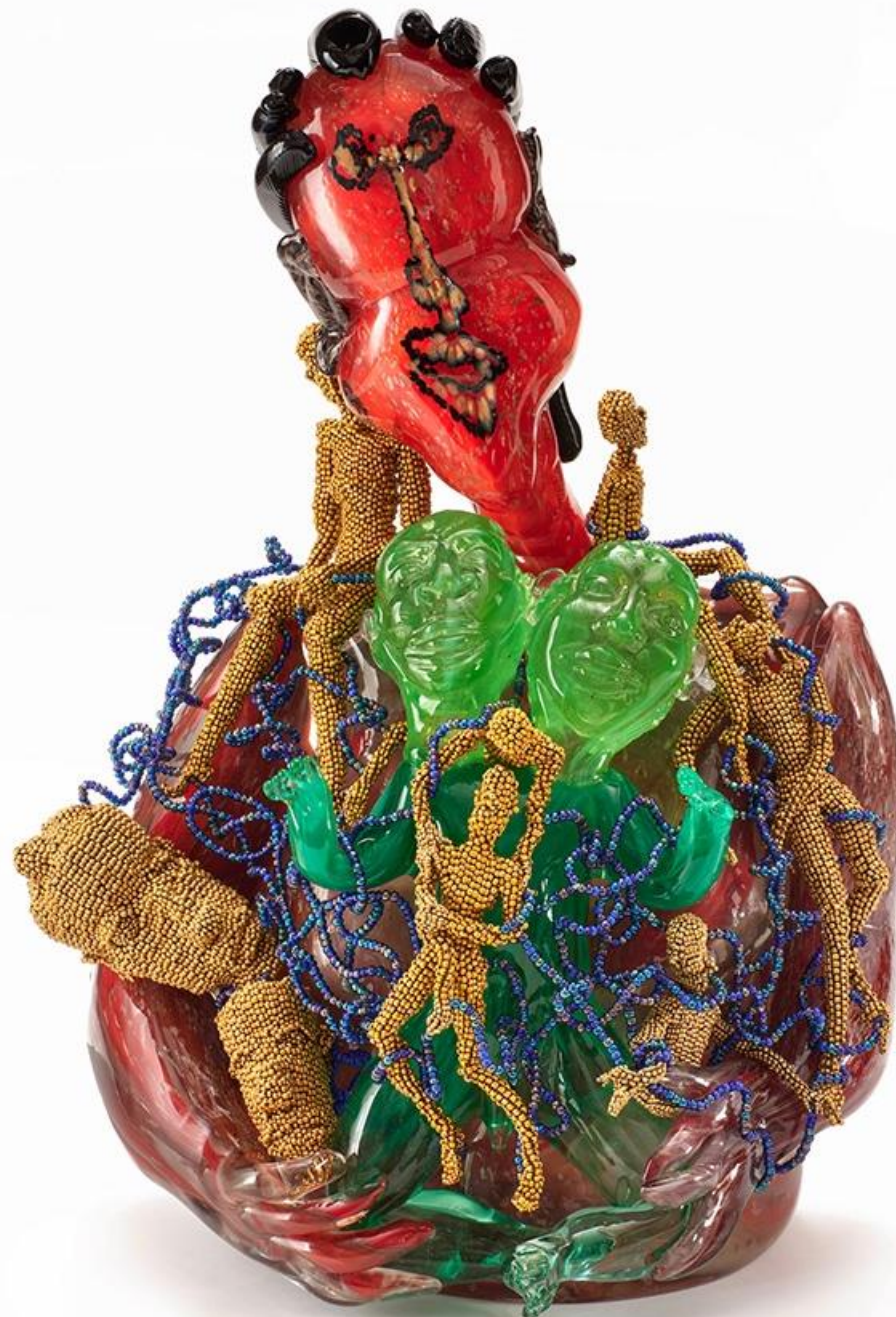
**Joyce J. Scott**

*Japanese Silk*, 2024-2025

Japanese beads, thread, fishing wire

34.5 x 28.5 inches





**Joyce J. Scott**

*Twins*, 2014/2023

Blown glass, fused beads, glass beads, wire, thread

23 x 16 x 13 inches





**Joyce J. Scott**

*Lips*, 1991

Beads, thread, wire

17 x 9.25 x 3 inches



**Joyce J. Scott**

*Lewd #1*, 2013

Hand-blown Murano glass, beads, wire, and thread

11 x 21 x 16 inches



Availability of artworks are not guaranteed, and prices are subject to change.

All images are © the Artist and/or Goya Contemporary Gallery.

No image may be used, copied, printed, in any way without permission.

Acquisitions may have loan stipulations, or may be reserved for museum only.  
Please discuss with our team to learn more.